

PROPOSED FIRST FLOOR PLAN
SCALE 1:100

FIRE LEGEND	
	SEPARATING WALLS
	60MIN FIRE RESISTING CONSTRUCTION
	30MIN FIRE RESISTING CONSTRUCTION
	MAINS SMOKE DETECTOR
	MAINS HEAT DETECTOR
	NON MAINTAINED EMERGENCY LIGHT
	BREAK GLASS UNIT
	FIRE SOUNDER
	ALARM CONTROL PANEL
	30MIN FIRE DOOR WITH SMOKE SEAL
	60MIN FIRE DOOR WITH SMOKE SEAL
	VENTILATION DUCTS / EXTRACTOR FANS

FIRE DETECTION AND EMERGENCY LIGHTING
AN AUTOMATIC FIRE DETECTION AND ALARM SYSTEM IS PROPOSED FOR THIS DEVELOPMENT. TYPE L1 DETECTION COVERAGE IS PROPOSED. (ALL ROOMS OPENING OUT INTO ESCAPE ROUTES, ESCAPE ROUTES, INNER ROOMS AND ATTIC VOIDS).
THE FIRE DETECTION AND ALARM SYSTEM SHALL BE IN ACCORDANCE WITH IS3218:2013 FIRE DETECTION & ALARM SYSTEM.
EMERGENCY LIGHTING TO BE INSTALLED IN ACCORDANCE WITH IS3217:2013, CODE OF PRACTICE FOR EMERGENCY LIGHTING
THE FIRE DETECTION WILL BE EXTENDED INTO THE ATTIC VOIDS. ANY VOID GREATER THAN 400MM IN HEIGHT WILL REQUIRE A SMOKE ALARM

MECHANICAL VENTILATION
PIPEWORK FOR MECHANICAL VENTILATION WILL NOT PASS THROUGH FIRE COMPARTMENT WALLS

30MIN FIRE WALL CONSTRUCTION
70MM STEEL STUD, 12.5MM FIRELINE BOARD TO EACH SIDE, TAPE AND JOINTED - MAXIMUM HEIGHT 2.80M

60MIN FIRE CONSTRUCTION
70MM METAL STUD, 15MM FIRELINE BOARD TO EACH SIDE, TAPE AND JOINTED - MAXIMUM HEIGHT 2.80M

ACS CONSULTING
ENGINEERS & PROJECT MANAGERS

via FULCRUM, UNIT 10A, SOUTH RING BUSINESS PARK, KINSALE ROAD, CORK
TEL: (087) 6648982
EMAIL: CHRISTOPHER.SCULLY@ACSCONSULTING.IE

PROJECT:
WORKS TO EXISTING HOTEL AND GUEST HOUSE

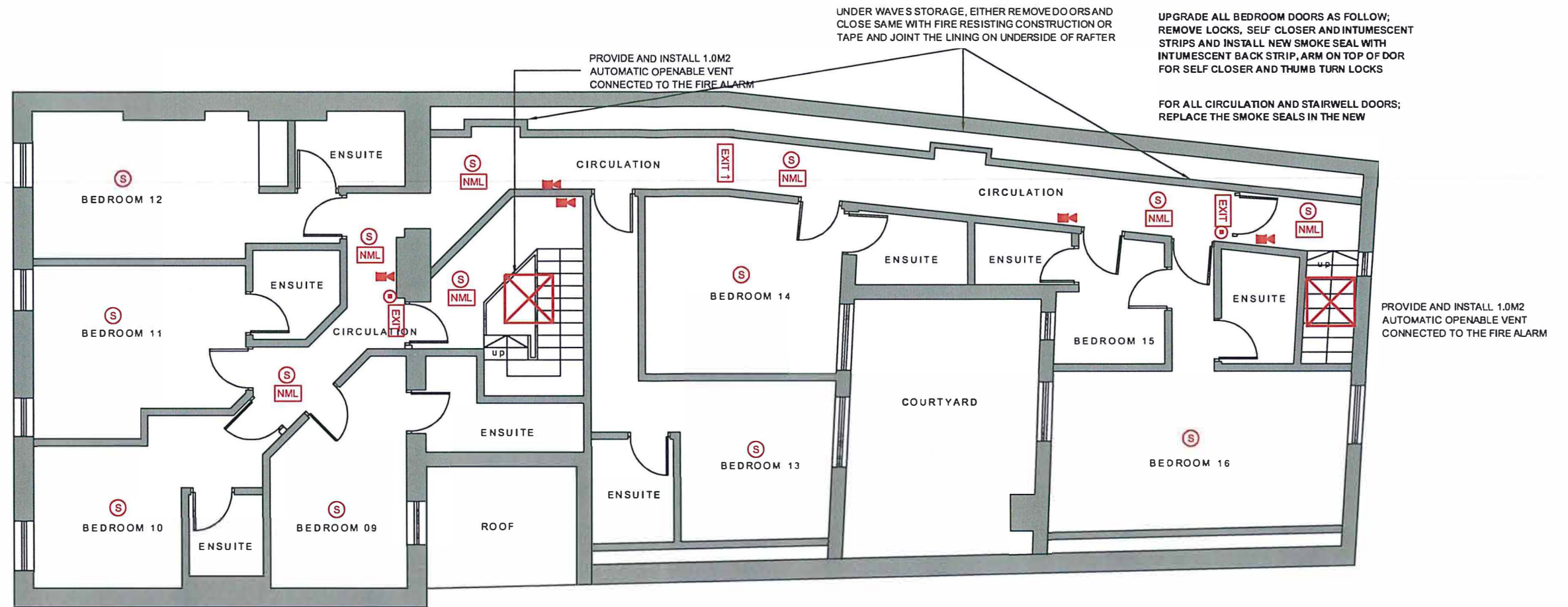
LOCATION:
PROMENADE HOTEL, SANDHILL RD, BALLYBUNION, CO. KERRY

DATE CREATED:
26.07.2016

CLIENT REFERENCE:
11618/C

DRAWING TITLE:
FIRE FIRST FLOOR PLAN

REVIEW ONLY			A	05.07.18	CS
REVISION:			ISSUE:	DATE:	BY:
STAGE:	SCALE:	DWG TYPE:	DRAWING NUMBER:		
REVIEW	1:100	A3	02		



PROPOSED SECOND FLOOR PLAN
SCALE 1:00

FIRE LEGEND	
—	SEPARATING WALLS
—	60MIN FIRE RESISTING CONSTRUCTION
—	30MIN FIRE RESISTING CONSTRUCTION
(S)	MAINS SMOKE DETECTOR
(H)	MAINS HEAT DETECTOR
(NML)	NON MAINTAINED EMERGENCY LIGHT
(B)	BREAK GLASS UNIT
(F)	FIRE SOUNDER
(A)	ALARM CONTROL PANEL
FD30S	30MIN FIRE DOOR WITH SMOKE SEAL
FD60S	60MIN FIRE DOOR WITH SMOKE SEAL
(V)	VENTILATION DUCTS / EXTRACTOR FANS

<p>FIRE DETECTION AND EMERGENCY LIGHTING</p> <p>AN AUTOMATIC FIRE DETECTION AND ALARM SYSTEM IS PROPOSED FOR THIS DEVELOPMENT. TYPE L1 DETECTION COVERAGE IS PROPOSED. (ALL ROOMS OPENING OUT INTO ESCAPE ROUTES, ESCAPE ROUTES, INNER ROOMS AND ATTIC VOIDS).</p> <p>THE FIRE DETECTION AND ALARM SYSTEM SHALL BE IN ACCORDANCE WITH IS3218:2013 FIRE DETECTION & ALARM SYSTEM.</p> <p>EMERGENCY LIGHTING TO BE INSTALLED IN ACCORDANCE WITH IS3217:2013, CODE OF PRACTICE FOR EMERGENCY LIGHTING</p> <p>THE FIRE DETECTION WILL BE EXTENDED INTO THE ATTIC VOIDS. ANY VOID GREATER THAN 400MM IN HEIGHT WILL REQUIRE A SMOKE ALARM</p> <p>MECHANICAL VENTILATION</p> <p>PIPEWORK FOR MECHANICAL VENTILATION WILL NOT PASS THROUGH FIRE COMPARTMENT WALLS</p> <p>30MIN FIRE WALL CONSTRUCTION</p> <p>70MM STEEL STUD, 12.5MM FIRELINE BOARD TO EACH SIDE, TAPE AND JOINTED - MAXIMUM HEIGHT 2.80M</p> <p>60MIN FIRE CONSTRUCTION</p> <p>70MM METAL STUD, 15MM FIRELINE BOARD TO EACH SIDE, TAPE AND JOINTED - MAXIMUM HEIGHT 2.80M</p>

ACS CONSULTING
ENGINEERS & PROJECT MANAGERS

via FULCRUM, UNIT 10A, SOUTH RING BUSINESS PARK, KINSALE ROAD, CORK
TEL: (087) 6648982
EMAIL: CHRISTOPHER.SCULLY@ACSCONSULTING.IE

PROJECT:
WORKS TO EXISTING HOTEL AND GUEST HOUSE

LOCATION:
PROMENADE HOTEL, SANDHILL RD, BALLYBUNION, CO. KERRY

DATE CREATED:
26.07.2016

CLIENT REFERENCE:
11618/C

DRAWING TITLE:
FIRE SECOND FLOOR PLAN

REVIEW ONLY	A	05.07.18	CS
REVISION:	ISSUE:	DATE:	BY:
STAGE: REVIEW	SCALE: 1:100	DWG TYPE: A3	DRAWING NUMBER: 03